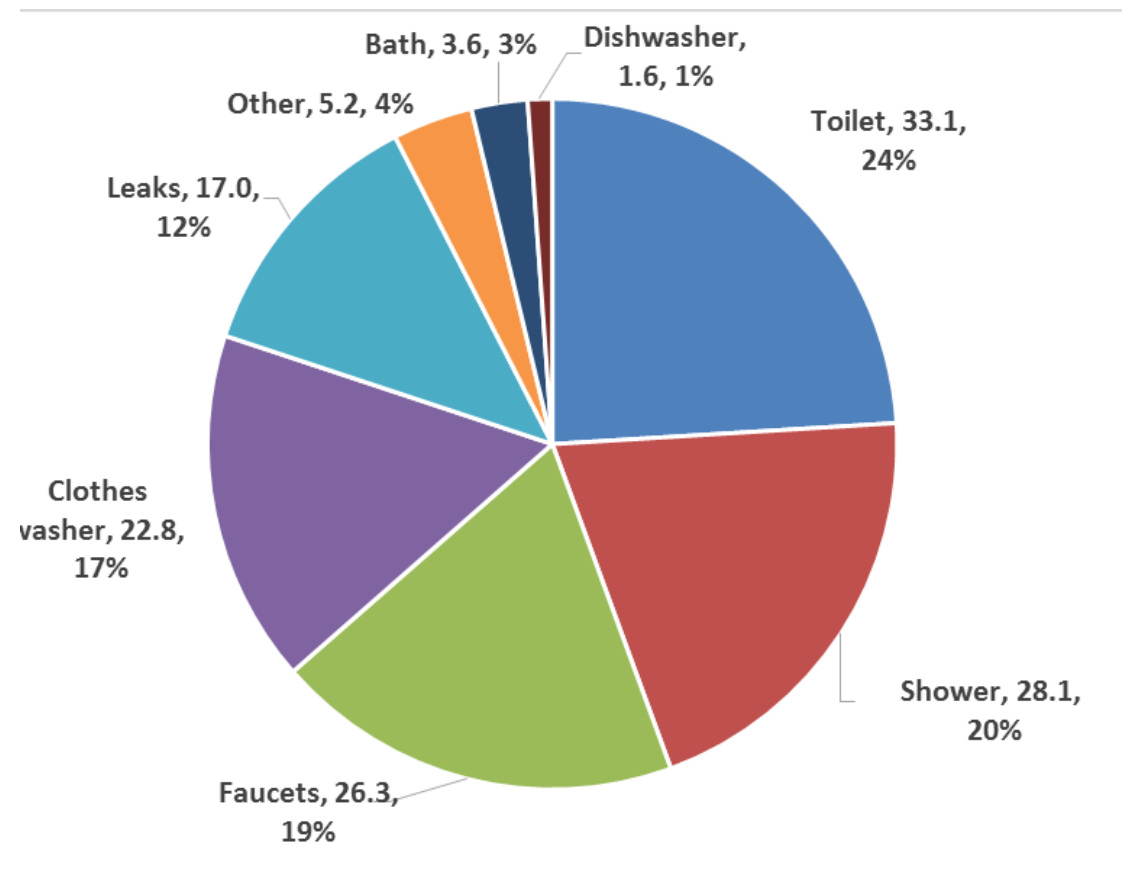
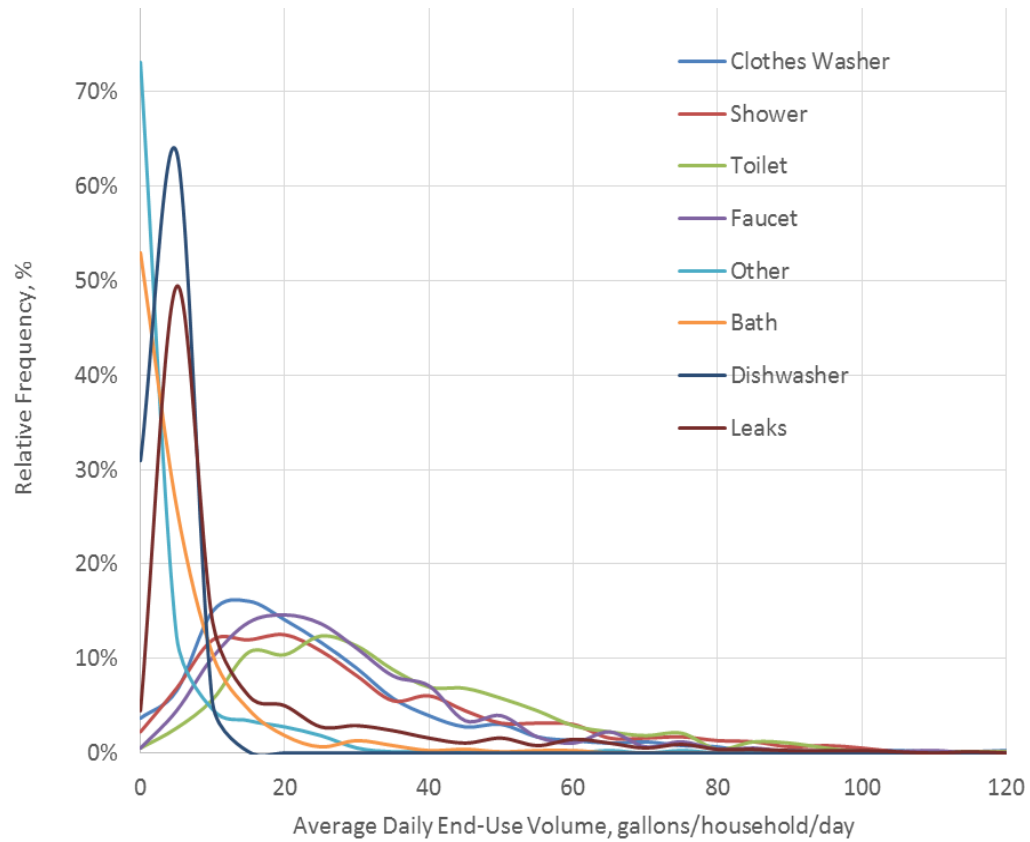


# Sauver l'eau

Par: Ava, Grace, Hailey





## Le utilisation d'eau au Canada

Le moyenne des Canadian utiliser 329 L / 72 G de l'eau chaque jour.  
 Oui je sais, sais vraiment beaucoup! Voici qu'est-ce que le personne utiliser l'eau pour.

# Notre plan d'action

Notre plan été de prendre le test de l'eau sure CBC sure le 8 avril et prendre un deuxième fois sure le 16 avril. Sa ce 8 jour de change notre habitudes d'eau.

[Daily Water Usage  
Calculator | Feature | CBC  
Prince Edward Island](#)





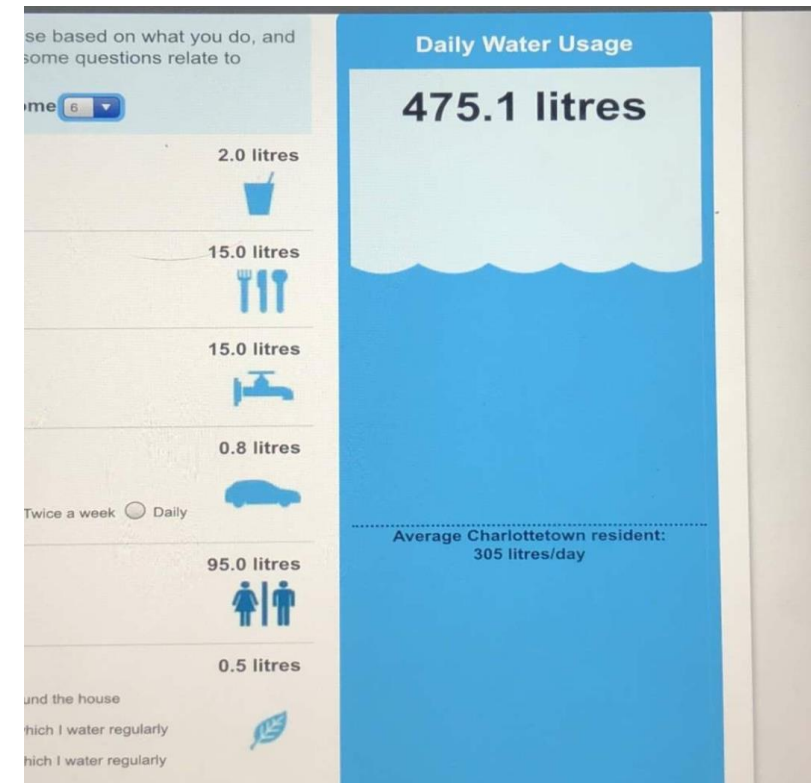
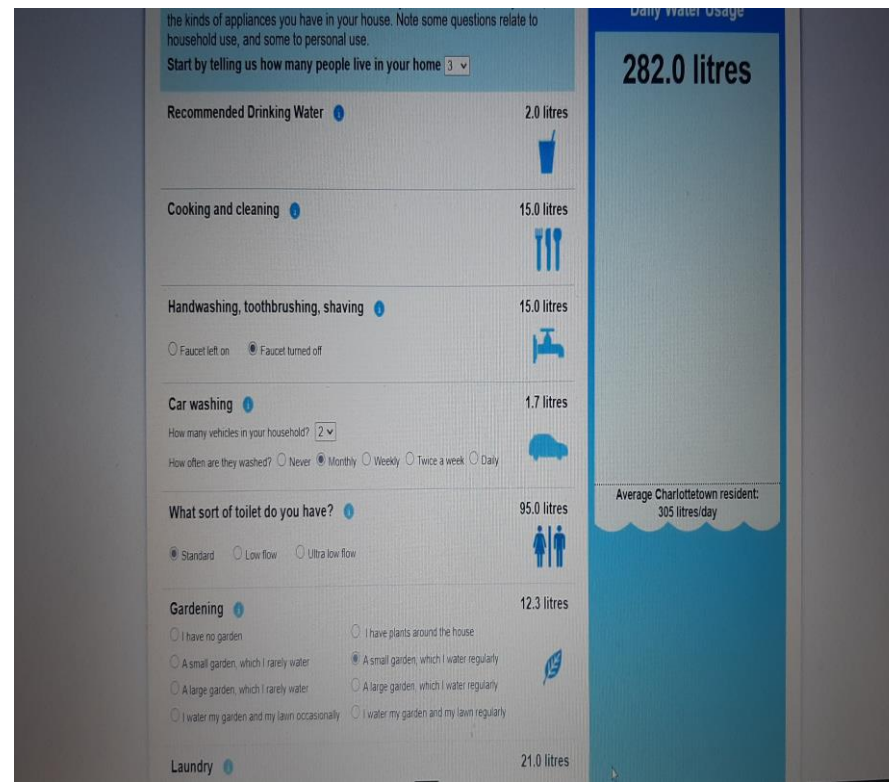
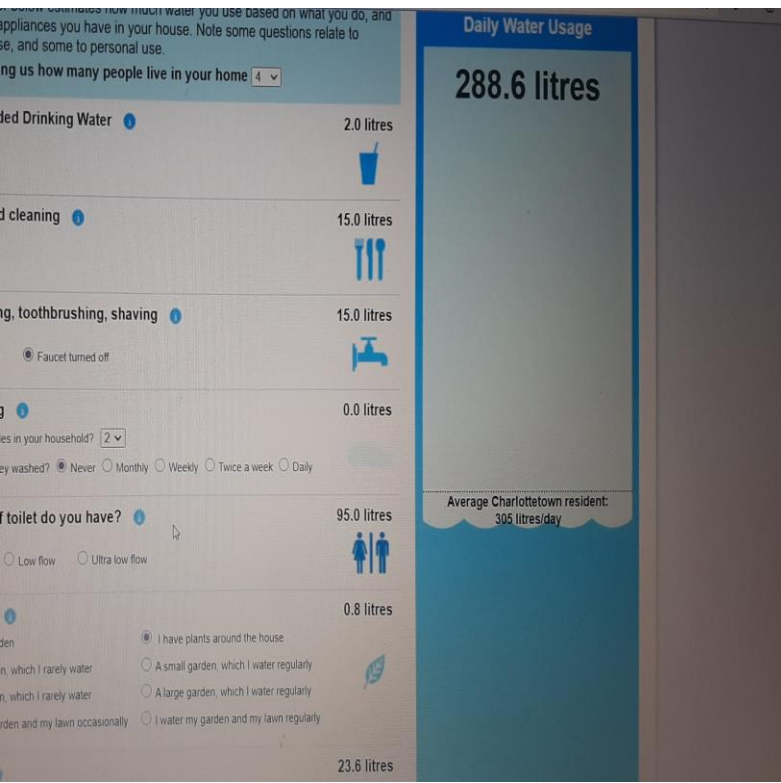
# le test du l'eau

Voici notre résultats de test.

Ava – 288.6 L / 63.4 G

Hailey – 282 L / 62 G

Grace – 475.1 L / 104.5 G



## Les objectifs de la semaine

- Chaque un des nous a choisi les chose de travaille sur pour minimiser notre consommation d'eau. Le grand chose que nous a travaille sure été combien de temps nous prendre les douche pour. Notre temps moyen passé dans la douche était de 15 minutes ou plus mais maintenant nous prendre 5 a 10 minutes dans la douche.





# Le deuxième test de l'eau

Nous a travaille très fort pour 8 jours et a notre surprise les nombre a change.

Ava – 181.7 L / 39.9 G

Hailey – 197.7 L / 43.4 G

Grace – 234 L / 51.4 G

allowed in its provincial permit. But the Winter River Watershed Association believes the amount allowed in the permit is unsustainable. They want the province to reduce the amount of water the city is allowed to take. The situation has prompted the city to ask residents to conserve water.

**CBC News has created this calculator to help you see how much water you are using, and how you might use less.**

The calculator below estimates how much water you use based on what you do, and the kinds of appliances you have in your house. Note some questions relate to household use, and some to personal use.

**Start by telling us how many people live in your home**

**Recommended Drinking Water** 2.0 litres

**Cooking and cleaning** 15.0 litres

**Handwashing, toothbrushing, shaving** 20.0 litres

Faucet left on  Faucet turned off

**Car washing** 0.0 litres

How many vehicles in your household? 2

How often are they washed?  Never  Monthly  Weekly  Twice a week  Daily

**What sort of toilet do you have?** 95.0 litres

Standard  Low flow  Ultra low flow

**Gardening** 22.2 litres

I have no garden  I have plants around the house

A small garden, which I rarely water  A small garden, which I water regularly

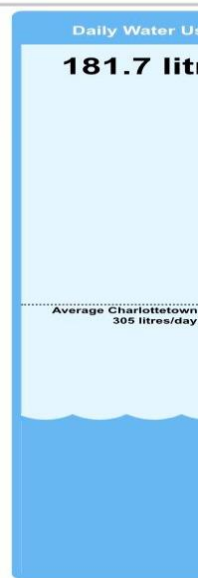
A large garden, which I rarely water  A large garden, which I water regularly

I water my garden and my lawn occasionally  I water my garden and my lawn regularly

**Laundry** 27.5 litres

How many loads of laundry are done by your household per week? 7

What type of laundry machine do you have?  Top loader



**Daily Water Usage**

197.7 litres

Average Charlottetown resident: 305 litres/day

1 person live in your home

2.0 litres

15.0 litres

15.0 litres

0.0 litres

Monthly  Weekly  Twice a week  Daily

95.0 litres

low flow

37.0 litres

5.1 litres

I have plants around the house

A small garden, which I water regularly

A large garden, which I water regularly

I water my garden and my lawn regularly

**Daily Water Usage**

234.0 litres

Average Charlottetown resident: 305 litres/day

6 people live in your home

2.0 litres

15.0 litres

15.0 litres

0.0 litres

Monthly  Weekly  Twice a week  Daily

95.0 litres

low flow

0.5 litres

10.5 litres

I have plants around the house

A small garden, which I water regularly

A large garden, which I water regularly

I water my garden and my lawn regularly

---

# Merci tout le monde

---

Maintenant ce votre tour, faire le test et voir combien d'eau vous utilisez par jour. Merci pour écoute a notre présentation J'espère que sa aidé à vous montrer comment les petites choses que vous faites peuvent aider à réduire de votre consommation d'eau.

